

Hospitality



Breakfast Buffet

- Channel: 52
- Demo: M/F 30+
- Tempo: Casual - Active
- Styles: Rock, R&B
- Bio-cycle: 30 min.



Burgers & Beer

- Channel: 120
- Demo: M/F 25+
- Tempo: Casual - Active
- Styles: Rock
- Bio-cycle: 30 min.



Cafe Mexico

- Channel: 319
- Demo: M/F 18+
- Tempo: Casual - Active
- Styles: Latin
- Bio-cycle: 30 min.



Downtown Dining

- Channel: 121
- Demo: M/F 30+
- Tempo: Casual
- Styles: Jazz, R&B
- Bio-cycle: 30 min.



Espresso

- Channel: 61
- Demo: M/F 20-45
- Tempo: Casual
- Styles: Rock, R&B
- Bio-cycle: 30 min.



Fine Dining

- Channel: 6
- Demo: M/F 30+
- Tempo: Relaxed - Casual
- Styles: Classical, Latin
- Bio-cycle: 30 min.



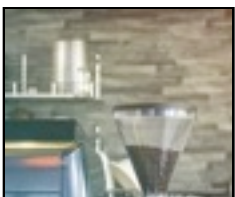
Greek Dining

- Channel: 134
- Demo: M/F 16+
- Tempo: Relaxed - Casual
- Styles: World, Pop, , Jazz
- Bio-cycle: 30 min.



Happy Hour

- Channel: 59
- Demo: M/F 21 - 35
- Tempo: Casual - Active
- Styles: Rock, R&B
- Bio-cycle: 30 min.



Hipster Coffeehouse

- Channel: 110
- Demo: M/F 24+
- Tempo: Relaxed - Casual
- Styles: Rock, Jazz, Dance
- Bio-cycle: 30 min.



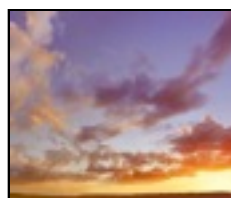
Irish Pub

- Channel: 80
- Demo: M/F 25+
- Tempo: Casual - Active
- Styles: Irish, Country
- Bio-cycle: 30 min.



Italian Dining

- Channel: 73
- Demo: M/F 26+
- Tempo: Relaxed - Casual
- Styles: Italian, Pop
- Bio-cycle: 40 min.



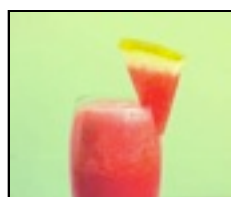
Italian Sunset

- Channel: 74
- Demo: M/F 35+
- Tempo: Relaxed - Casual
- Styles: Italian, Classical
- Bio-cycle: 60 min.



Jazz Club

- Channel: 33
- Demo: Adult M/F 30+
- Tempo: Relaxed - Active
- Styles: Jazz, Blues
- Bio-cycle: 40 min.



Juice Bar

- Channel: 122
- Demo: M/F
- Tempo: Active
- Styles: Rock, Pop, Reggae
- Bio-cycle: 20 min.



La Patisserie

- Channel: 83
 • Demo: M/F All Ages
 • Tempo: Relaxed - Active
 • Styles: French, Jazz, Pop
 • Bio-cycle: 60 min.



Roadhouse Rock

- Channel: 284
 • Demo: M/F 30 - 50
 • Tempo: Casual - Active
 • Styles: Rock, Country
 • Bio-cycle: 20 min.



Sandwich Shop

- Channel: 131
 • Demo: M/F All
 • Tempo: Casual - Active
 • Styles: Rock, Dance
 • Bio-cycle: 30 min.



Smooth Cocktails

- Channel: 7
 • Demo: M/F 25+
 • Tempo: Casual
 • Styles: Jazz, R&B
 • Bio-cycle: 40 min.



TGIF!

- Channel: 113
 • Demo: M/F 18-25
 • Tempo: Active
 • Styles: Dance, R&B
 • Bio-cycle: 60 min.



Thai Dining

- Channel: 287
 • Demo: M/F 25+
 • Tempo: Relaxed - Casual
 • Styles: World, Jazz, Pop
 • Bio-cycle: 30 min.



The Brewery

- Channel: 126
 • Demo: Male 30-55
 • Tempo: Casual - Active
 • Styles: Rock, R&B
 • Bio-cycle: 30 min.



The Diner

- Channel: 85
 • Demo: M/F 30+
 • Tempo: Relaxed - Active
 • Styles: Rock, R&B
 • Bio-cycle: 30 min.



Tropical Flavors

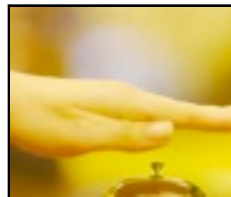
- Channel: 282
 • Demo: M/F 30 - 65
 • Tempo: Relaxed - Active
 • Styles: Hawaiian, Jazz, Latin
 • Bio-cycle: 30 min.

Instrumental



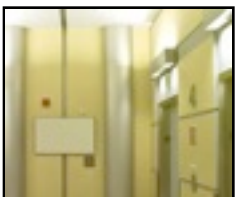
Bookstore Harmony

- Channel: 124
 • Demo: M/F All Ages
 • Tempo: Relaxed
 • Styles: Classical, NewAge
 • Bio-cycle: 30 min.



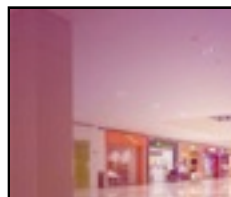
Concierge

- Channel: 5
 • Demo: M/F 35+
 • Tempo: Casual
 • Styles: Jazz, Pop
 • Bio-cycle: 60 min.



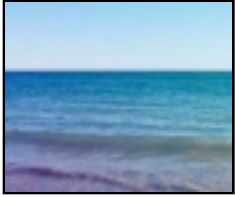
Elevator Music

- Channel: 199
 • Demo: M/F 50+
 • Tempo: Relaxed - Casual
 • Styles: Pop, Jazz, Rock
 • Bio-cycle: 30 min.



General Retail

- Channel: 13
 • Demo: M/F 30 - 50
 • Tempo: Casual - Active
 • Styles: Rock, Pop, R
 • Bio-cycle: 20 min.

**Interludes**

- Channel: 51
- Demo: M/F All
 - Tempo: Relaxed - Active
 - Styles: Pop, Jazz
 - Bio-cycle: 30 min.

**Meditation**

- Channel: 10
- Demo: M/F All Ages
 - Tempo: Relaxed - Casual
 - Styles: NewAge
 - Bio-cycle: 60 min.

**Nature Sounds**

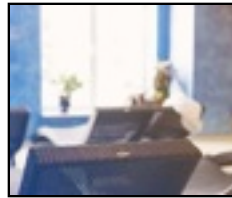
- Channel: 323
- Demo: M/F 25+
 - Tempo: Relaxed - Casual
 - Styles: SFX
 - Bio-cycle: 60 min.

**Smooth Rythms**

- Channel: 285
- Demo: M/F 25 - 55
 - Tempo: Relaxed - Casual
 - Styles: Jazz
 - Bio-cycle: 30 min.

**Songs In Nature**

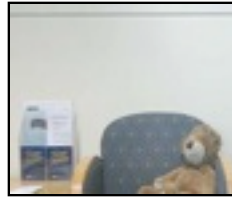
- Channel: 322
- Demo: M/F 25+
 - Tempo: Relaxed - Active
 - Styles: NewAge
 - Bio-cycle: 20 min.

**Spa Day**

- Channel: 125
- Demo: M/F All Ages
 - Tempo: Relaxed
 - Styles: Classical, NewAge
 - Bio-cycle: 60 min.

**The Office**

- Channel: 14
- Demo: Adult M/F 30+
 - Tempo: Relaxed - Active
 - Styles: Pop, Jazz
 - Bio-cycle: 20 min.

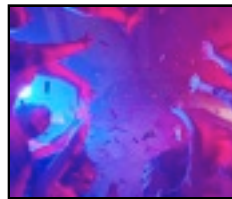
**Waiting Room**

- Channel: 12
- Demo: M/F All Ages
 - Tempo: Relaxed - Casual
 - Styles: Jazz, Pop
 - Bio-cycle: 60 min.

Latin

**Latin Chart Toppers**

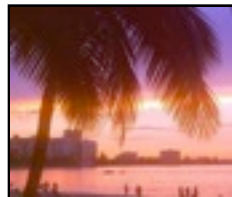
- Channel: 55
- Demo: M/F 22+
 - Tempo: Relaxed - Active
 - Styles: Latin
 - Bio-cycle: 30 min.

**Latin Dance**

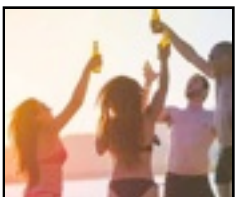
- Channel: 56
- Demo: M/F 22+
 - Tempo: Relaxed - Active
 - Styles: Latin, Dance
 - Bio-cycle: 30 min.

**Latin Guitar**

- Channel: 298
- Demo: M/F 35 - 65
 - Tempo: Relaxed - Casual
 - Styles: Latin, Classical
 - Bio-cycle: 30 min.

**Reggaeton**

- Channel: 94
- Demo: M/F 18
 - Tempo: Relaxed - Active
 - Styles: Latin
 - Bio-cycle: 30 min.

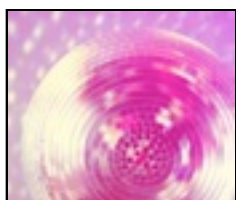
**Salsa and Pop**

- Channel: 57
- Demo: M/F 16+
 - Tempo: Relaxed - Active
 - Styles: Latin
 - Bio-cycle: 20 min.

**Urban Ragga**

- Channel: 23
- Demo: M/F 18-30
 - Tempo: Relaxed - Active
 - Styles: Latin, Reggae, R
 - Bio-cycle: 20 min.

Music



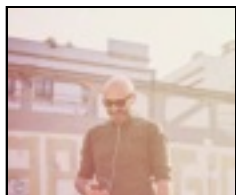
70's Dance Party

- Channel: 210
- Demo: M/F 40+
 - Tempo: Active
 - Styles: Dance, R&B
 - Bio-cycle: 30 min.



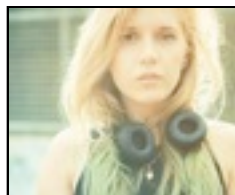
90's Dance Party

- Channel: 208
- Demo: M/F 30+
 - Tempo: Casual - Active
 - Styles: Dance, R&B
 - Bio-cycle: 30 min.



Adult Alternative

- Channel: 108
- Demo: M/F 35+
 - Tempo: Casual - Active
 - Styles: Rock, NewAge, R
 - Bio-cycle: 30 min.



Alternative Vibes

- Channel: 32
- Demo: M/F 16-28
 - Tempo: Casual - Active
 - Styles: Rock
 - Bio-cycle: 30 min.



Big Band Pop

- Channel: 44
- Demo: M/F 35+
 - Tempo: Relaxed - Active
 - Styles: Pop, Jazz
 - Bio-cycle: 30 min.



Big Band Swing

- Channel: 54
- Demo: M/F All Ages
 - Tempo: Casual - Active
 - Styles: Pop, Jazz
 - Bio-cycle: 20 min.



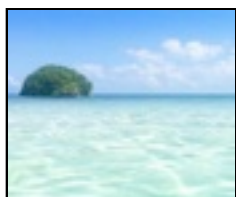
Blues

- Channel: 179
- Demo: M/F 20+
 - Tempo: Relaxed - Active
 - Styles: Blues
 - Bio-cycle: 40 min.



Blues Guitar

- Channel: 25
- Demo: M/F All
 - Tempo: Relaxed - Active
 - Styles: Blues, Rock
 - Bio-cycle: 30 min.



Bossa Nova

- Channel: 231
- Demo: M/F 25 - 45
 - Tempo: Relaxed - Active
 - Styles: Jazz
 - Bio-cycle: 30 min.



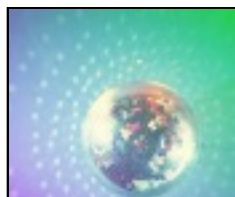
Chart Hits!

- Channel: 100
- Demo: M/F All Ages
 - Tempo: Relaxed - Active
 - Styles: Country, R&B
 - Bio-cycle: 30 min.



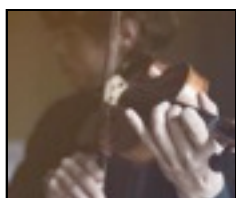
Children's Bop!

- Channel: 89
- Demo: M/F 4-10
 - Tempo: Relaxed - Active
 - Styles: Children, Rock, Dance
 - Bio-cycle: 30 min.



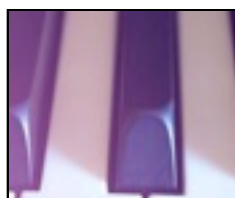
Classic Hits 70s and 80s

- Channel: 41
- Demo: Male 40+
 - Tempo: Relaxed - Active
 - Styles: Rock, R&B
 - Bio-cycle: 30 min.



Classical Favorites

- Channel: 22
- Demo: All Ages
 - Tempo: Relaxed - Active
 - Styles: Classical
 - Bio-cycle: 30 min.



Classical Piano

- Channel: 48
- Demo: All ages
 - Tempo: Relaxed - Active
 - Styles: Classical, NewAge
 - Bio-cycle: 30 min.



Club Dance

Channel: 35
 • Demo: M/F 18
 • Tempo: Casual - Active
 • Styles: Dance
 • Bio-cycle: 20 min.



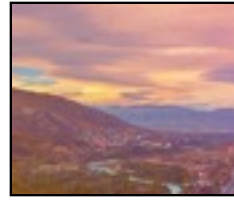
ClubSation

Channel: 20
 • Demo: M/F 16-35
 • Tempo: Active
 • Styles: Dance
 • Bio-cycle: 30 min.



Conscience Reggae

Channel: 206
 • Demo: M/F 30+
 • Tempo: Relaxed - Active
 • Styles: Reggae
 • Bio-cycle: 30 min.



Country Roads I

Channel: 18
 • Demo: M/F 18+
 • Tempo: Relaxed - Active
 • Styles: Country
 • Bio-cycle: 20 min.



Country Roads II

Channel: 299
 • Demo: M/F 25 - 35
 • Tempo: Relaxed - Active
 • Styles: Country
 • Bio-cycle: 20 min.



Covers

Channel: 112
 • Demo: M/F 16+
 • Tempo: Relaxed - Active
 • Styles: Dance, R&B
 • Bio-cycle: 30 min.



Crooners

Channel: 26
 • Demo: M/F 40+
 • Tempo: Relaxed - Active
 • Styles: Pop
 • Bio-cycle: 20 min.



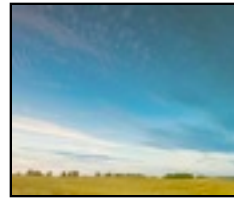
Disco Hits

Channel: 204
 • Demo: M/F 25+
 • Tempo: Casual - Active
 • Styles: Dance
 • Bio-cycle: 30 min.



Divas!

Channel: 106
 • Demo: Female 10+
 • Tempo: Relaxed
 • Styles: R&B, Dance
 • Bio-cycle: 30 min.



Easy Listening

Channel: 50
 • Demo: M/F 35+
 • Tempo: Relaxed - Casual
 • Styles: Pop, Jazz
 • Bio-cycle: 30 min.



Electronic Chill

Channel: 185
 • Demo: M/F 30+
 • Tempo: Relaxed - Active
 • Styles: Dance, R&B
 • Bio-cycle: 30 min.



Electronic Vibes

Channel: 95
 • Demo: M/F 20 - 30
 • Tempo: Relaxed - Active
 • Styles: Dance
 • Bio-cycle: 30 min.



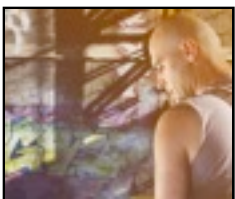
Folk Rock

Channel: 30
 • Demo: 30+
 • Tempo: Relaxed - Active
 • Styles: Rock, Country
 • Bio-cycle: 20 min.



Greatest Hits 70s 80s & 90s

Channel: 42
 • Demo: M/F 35+
 • Tempo: Casual - Active
 • Styles: Rock, R&B
 • Bio-cycle: 30 min.



Hard Rock Classics

Channel: 36
 • Demo: M/F 30-55
 • Tempo: Relaxed - Active
 • Styles: Rock
 • Bio-cycle: 30 min.



Hawaiian Paradise

Channel: 72
 • Demo: M/F 30-55
 • Tempo: Relaxed - Active
 • Styles: Hawaiian
 • Bio-cycle: 20 min.



Hippie Love

Channel: 118
 • Demo: M/F 18+
 • Tempo: Relaxed - Active
 • Styles: Pop, Rock, Dance
 • Bio-cycle: 30 min.



Hot Hits

Channel: 58
 • Demo: M/F 18+
 • Tempo: Casual - Active
 • Styles: Dance, R&B
 • Bio-cycle: 20 min.



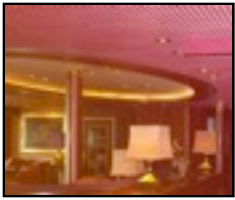
Indie Pop!

Channel: 115
 • Demo: M/F 19-30
 • Tempo: Relaxed - Active
 • Styles: Pop, Dance, Rock
 • Bio-cycle: 30 min.



Island Riddim

Channel: 96
 • Demo: M/F 18+
 • Tempo: Relaxed - Active
 • Styles: Reggae
 • Bio-cycle: 30 min.



Jazz Lounge

Channel: 34
 • Demo: M/F 30+
 • Tempo: Relaxed - Active
 • Styles: Jazz
 • Bio-cycle: 30 min.



Just Rock, No Roll

Channel: 114
 • Demo: Male 22-40
 • Tempo: Relaxed - Active
 • Styles: Rock
 • Bio-cycle: 30 min.



Metal Apocalypse

Channel: 84
 • Demo: Male 25+
 • Tempo: Casual - Active
 • Styles: Rock
 • Bio-cycle: 30 min.



Millennium Mix

Channel: 91
 • Demo: M/F 30+
 • Tempo: Relaxed - Active
 • Styles: Pop, Rock, R
 • Bio-cycle: 20 min.



Modern Rock

Channel: 104
 • Demo: M/F 16-40
 • Tempo: Active
 • Styles: Rock
 • Bio-cycle: 30 min.



Old School Rock

Channel: 107
 • Demo: M/F All
 • Tempo: Relaxed - Active
 • Styles: Rock
 • Bio-cycle: 30 min.



Only the Funk

Channel: 209
 • Demo: M/F 25+
 • Tempo: Relaxed - Active
 • Styles: Dance, R&B
 • Bio-cycle: 30 min.



Pop Ballads

Channel: 302
 • Demo: M/F 25+
 • Tempo: Relaxed
 • Styles: Pop, R&B
 • Bio-cycle: 30 min.



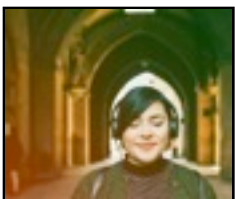
Pop Chart Toppers

Channel: 28
 • Demo: M/F All Ages
 • Tempo: Casual - Active
 • Styles: Rock, Dance, R
 • Bio-cycle: 30 min.



Pop Music 2000

Channel: 16
 • Demo: M/F 18-35
 • Tempo: Relaxed - Active
 • Styles: Rock, R&B
 • Bio-cycle: 30 min.



Positive Vibes

Channel: 133
 • Demo: M/F
 • Tempo: Relaxed - Active
 • Styles: R&B
 • Bio-cycle: 60 min.



Rap City

Channel: 19
 • Demo: M/F 16-25
 • Tempo: Casual - Active
 • Styles: Rap, R&B
 • Bio-cycle: 30 min.



Rasta Reggae

Channel: 97
 • Demo: M/F 16+
 • Tempo: Relaxed - Active
 • Styles: Reggae
 • Bio-cycle: 30 min.



Rock & Roll

Channel: 40
 • Demo: M/F All
 • Tempo: Relaxed - Active
 • Styles: Pop, Rock, R
 • Bio-cycle: 20 min.



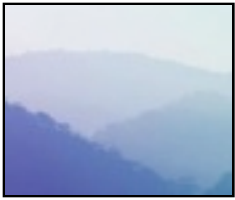
Rock Ballads

Channel: 300
 • Demo: M/F 25 - 55
 • Tempo: Relaxed
 • Styles: Rock
 • Bio-cycle: 30 min.



Smooth Jazz

Channel: 21
 • Demo: M/F 25-45
 • Tempo: Relaxed - Casual
 • Styles: Jazz, R&B
 • Bio-cycle: 30 min.



Soft Hits

Channel: 24
 • Demo: M/F 18+
 • Tempo: Relaxed
 • Styles: Rock, R&B
 • Bio-cycle: 30 min.



Solo Guitar

Channel: 297
 • Demo: M/F 30 - 65
 • Tempo: Relaxed - Active
 • Styles: Latin, Classical
 • Bio-cycle: 30 min.



Sonic Dream

Channel: 109
 • Demo: M/F 24+
 • Tempo: Relaxed - Casual
 • Styles: Rock, Pop, Dance
 • Bio-cycle: 30 min.



Southern Rock

Channel: 76
 • Demo: M/F 35+
 • Tempo: Relaxed - Active
 • Styles: Rock
 • Bio-cycle: 30 min.



Spirit In The Sky

Channel: 286
 • Demo: M/F 25 - 35
 • Tempo: Relaxed - Casual
 • Styles: Spiritual
 • Bio-cycle: 30 min.



The Motown Sound

Channel: 17
 • Demo: M/F All
 • Tempo: Relaxed - Active
 • Styles: R&B
 • Bio-cycle: 30 min.



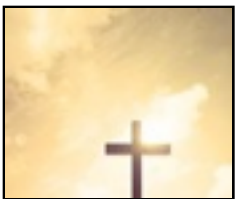
The Year in Music 2017

Channel: 190
 • Demo: M/F 14 - 26
 • Tempo: Relaxed - Active
 • Styles: R&B, Dance
 • Bio-cycle: 30 min.



Urban Soul

Channel: 43
 • Demo: M/F 20+
 • Tempo: Relaxed - Active
 • Styles: R&B
 • Bio-cycle: 30 min.



With God We Rock

Channel: 75
 • Demo: M/F 20+
 • Tempo: Relaxed - Active
 • Styles: Spiritual
 • Bio-cycle: 30 min.

Retail

**Alternative Male**

- Channel: 4
- Demo: Male 16-22
 - Tempo: Active
 - Styles: Rock
 - Bio-cycle: 20 min.

**Blue Jean Blues**

- Channel: 301
- Demo: Male 28+
 - Tempo: Casual
 - Styles: Rock, Blues
 - Bio-cycle: 20 min.

**Casual Boutique**

- Channel: 37
- Demo: M/F 26 - 37
 - Tempo: Casual
 - Styles: Rock, R&B
 - Bio-cycle: 20 min.

**Casual Male**

- Channel: 3
- Demo: Adult Male 35+
 - Tempo: Casual
 - Styles: Rock
 - Bio-cycle: 30 min.

**Junior's Casual**

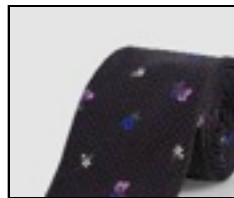
- Channel: 39
- Demo: Female 16-25
 - Tempo: Casual
 - Styles: Rock, R&B
 - Bio-cycle: 20 min.

**Junior's Dance**

- Channel: 2
- Demo: Female 16-22
 - Tempo: Active
 - Styles: Dance, R&B
 - Bio-cycle: 20 min.

**Kid Rock**

- Channel: 288
- Demo: M/F 7 - 14
 - Tempo: Relaxed - Active
 - Styles: Children
 - Bio-cycle: 20 min.

**Men's Classic Rock**

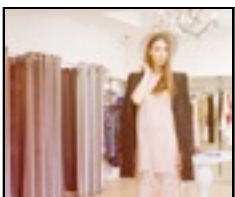
- Channel: 289
- Demo: Male 30 - 55
 - Tempo: Relaxed - Active
 - Styles: Rock
 - Bio-cycle: 20 min.

**The Market**

- Channel: 132
- Demo: M/F 25 - 45
 - Tempo: Casual - Active
 - Styles: Rock, R&B
 - Bio-cycle: 60 min.

**The Runway**

- Channel: 320
- Demo: M/F 25+
 - Tempo: Active
 - Styles: Dance, Jazz
 - Bio-cycle: 20 min.

**Upscale Boutique**

- Channel: 82
- Demo: Female 18-40
 - Tempo: Casual
 - Styles: Pop, R&B
 - Bio-cycle: 20 min.

**Urban Vibe**

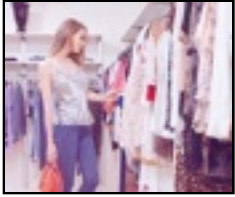
- Channel: 27
- Demo: M/F 16-24
 - Tempo: Casual - Active
 - Styles: R&B, Rap
 - Bio-cycle: 20 min.

**We Got The Beat**

- Channel: 29
- Demo: Female 16-22
 - Tempo: Casual - Active
 - Styles: Rock, Dance
 - Bio-cycle: 20 min.

**Women's Casual**

- Channel: 1
- Demo: Female 30+
 - Tempo: Casual
 - Styles: Pop, R&B
 - Bio-cycle: 20 min.



Women's Upscale

- Channel: 38
- Demo: M/F 35+
 - Tempo: Casual
 - Styles: Jazz, R&B
 - Bio-cycle: 20 min.

Seasonal



American Freedom

- Channel: 105
- Demo: All Ages M/F
 - Tempo: Relaxed - Active
 - Styles: Classical, Rock, Pop
 - Bio-cycle: 30 min.



Backyard Chill

- Channel: 119
- Demo: M/F 21+
 - Tempo: Relaxed
 - Styles: Reggae, Jazz, Dance
 - Bio-cycle: 30 min.



Christmas 2000+

- Channel: 70
- Demo: M/F/ 25+
 - Tempo: Relaxed - Active
 - Styles: Xmas
 - Bio-cycle: 20 min.



Christmas Classical

- Channel: 67
- Demo: M/F 35+
 - Tempo: Relaxed - Active
 - Styles: Xmas, Classical
 - Bio-cycle: 30 min.



Christmas Classics

- Channel: 227
- Demo: M/F 30 - 50
 - Tempo: Relaxed - Active
 - Styles: Xmas
 - Bio-cycle: 30 min.



Christmas Country

- Channel: 78
- Demo: M/F 30+
 - Tempo: Relaxed - Active
 - Styles: Xmas, Country
 - Bio-cycle: 30 min.



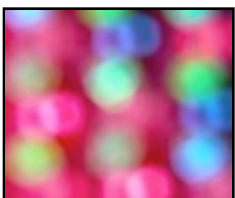
Christmas Crooners

- Channel 92
- Demo: M/F 25+
 - Tempo: Casual - Active



Christmas Dance Blend

- Channel: 103
- Demo: M/F 25+
 - Tempo: Active
 - Styles: Xmas, Dance
 - Bio-cycle: 10 min.



Christmas Energy

- Channel: 68
- Demo: M/F 16+
 - Tempo: Active
 - Styles: Xmas, Dance
 - Bio-cycle: 20 min.



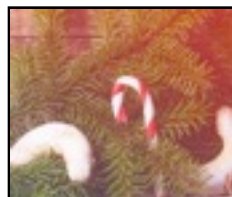
Christmas Folk Blend

- Channel: 99
- Demo: M/F All
 - Tempo: Relaxed - Active
 - Styles: Xmas, Rock
 - Bio-cycle: 30 min.



Christmas International

- Channel: 203
- Demo: M/F 16+
 - Tempo: Relaxed - Active
 - Styles: Xmas
 - Bio-cycle: 30 min.



Christmas Jazz Blend

- Channel: 66
- Demo: M/F 30+
 - Tempo: Relaxed - Active
 - Styles: Xmas, Jazz
 - Bio-cycle: 30 min.

**Christmas Pop Blend**

Channel: 49
 • Demo: M/F 30+
 • Tempo: Relaxed - Active
 • Styles: Xmas, Pop
 • Bio-cycle: 30 min.

**Christmas R&B Blend**

Channel: 69
 • Demo: M/F 18+
 • Tempo: Relaxed - Active
 • Styles: Xmas, R&B
 • Bio-cycle: 30 min.

**Christmas Rap Blend**

Channel: 63
 • Demo: M/F 16+
 • Tempo: Relaxed - Active
 • Styles: Xmas, Rap
 • Bio-cycle: 20 min.

**Christmas Rock Blend**

Channel: 46
 • Demo: M/F 18+
 • Tempo: Relaxed - Active
 • Styles: Xmas, Rock
 • Bio-cycle: 30 min.

**Christmas Soulful Blend**

Channel: 212
 • Demo: M/F 20+
 • Tempo: Relaxed - Active
 • Styles: Xmas, R&B
 • Bio-cycle: 20 min.

**Christmas Traditions**

Channel: 77
 • Demo: M/F 25+
 • Tempo: Relaxed - Casual
 • Styles: Xmas
 • Bio-cycle: 30 min.

**Classic Love Songs**

Channel: 71
 • Demo: M/F 25+
 • Tempo: Relaxed - Casual
 • Styles: Pop, R&B
 • Bio-cycle: 30 min.

**Fireworks & BBQ!**

Channel: 101
 • Demo: M/F All
 • Tempo: Casual - Active
 • Styles: Rock, Dance, Country
 • Bio-cycle: 30 min.

**Halloween Party!**

Channel: 45
 • Demo: M/F All Ages
 • Tempo: Relaxed - Active
 • Styles: Novelty, Rock, Pop
 • Bio-cycle: 30 min.

**Let's Celebrate!**

Channel: 128
 • Demo: All Ages
 • Tempo: Casual - Active
 • Styles: Dance, R&B
 • Bio-cycle: 60 min.

**Luck Of The Irish**

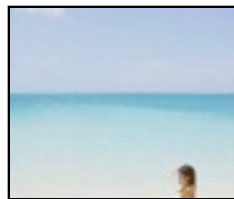
Channel: 81
 • Demo: M/F 35+
 • Tempo: Relaxed - Active
 • Styles: Irish
 • Bio-cycle: 20 min.

**Oktoberfest**

Channel: 93
 • Demo: M/F All
 • Tempo: Casual - Active
 • Styles: World
 • Bio-cycle: 30 min.

**Rockin' Love**

Channel: 65
 • Demo: M/F 18+
 • Tempo: Relaxed - Active
 • Styles: Rock
 • Bio-cycle: 20 min.

**Soak Up The Sun**

Channel: 111
 • Demo: M/F 16+
 • Tempo: Relaxed - Active
 • Styles: Rock, Country, R
 • Bio-cycle: 30 min.

**Valentine Dance**

Channel: 64
 • Demo: M/F 17+
 • Tempo: Relaxed - Active
 • Styles: Dance, R&B
 • Bio-cycle: 20 min.

**Valentine's Day Pop**

Channel: 130
 • Demo: M/F 30+
 • Tempo: Relaxed - Active
 • Styles: R&B, Rock
 • Bio-cycle: 60 min.

Wellness



Beauty Treatment

- Channel: 11
- Demo: M/F 25 - 50
 - Tempo: Relaxed - Casual
 - Styles: Jazz, Latin
 - Bio-cycle: 60 min.



Cardio - Dance

- Channel: 318
- Demo: M/F 25 - 35
 - Tempo: Active
 - Styles: Dance
 - Bio-cycle: 30 min.



Cardio - Disco

- Channel: 317
- Demo: M/F 40+
 - Tempo: Casual - Active
 - Styles: Dance
 - Bio-cycle: 30 min.



Cardio - Rock

- Channel: 315
- Demo: M/F 35 - 45
 - Tempo: Active
 - Styles: Rock
 - Bio-cycle: 30 min.



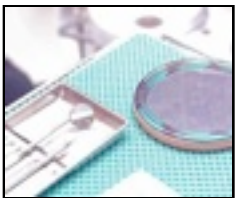
Cardio - Rock n' Roll

- Channel: 316
- Demo: M/F 40 - 60
 - Tempo: Active
 - Styles: Rock
 - Bio-cycle: 30 min.



Cha Cha Zumba!

- Channel: 117
- Demo: M/F 16+
 - Tempo: Casual - Active
 - Styles: Latin
 - Bio-cycle: 30 min.



Contemporary Dentist

- Channel: 123
- Demo: M/F
 - Tempo: Casual
 - Styles: Rock, R&B
 - Bio-cycle: 60 min.



Cutting Edge

- Channel: 31
- Demo: M/F 18-35
 - Tempo: Casual - Active
 - Styles: Dance, Rock
 - Bio-cycle: 30 min.



Get Zen

- Channel: 116
- Demo: M/F 25+
 - Tempo: Relaxed - Casual
 - Styles: NewAge, World
 - Bio-cycle: 60 min.



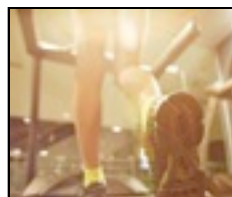
Meditation

- Channel: 283
- Demo: M/F 25 - 65
 - Tempo: Relaxed
 - Styles: NewAge
 - Bio-cycle: 60 min.



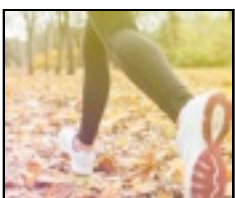
Pop Cycles

- Channel: 313
- Demo: M/F 25 - 35
 - Bio-cycle: 40 min



Tread Mill 140

- Channel: 60
- Demo: M/F 35-65
 - Tempo: Active
 - Styles: Rock
 - Bio-cycle: 30 min.



Well Being

- Channel: 53
- Demo: M/F 30+
 - Tempo: Relaxed
 - Styles: NewAge
 - Bio-cycle: 60 min.